

# The magic of teamwork



## Synergy and Collaboration

Teamwork is the collaborative effort of a group of individuals working together towards a common goal or objective.

### Support and Motivation

Teams provide a support system where members can rely on each other for assistance, guidance, and motivation.

### Synergy

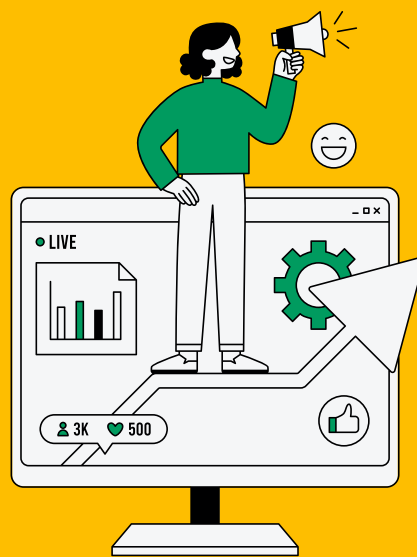
Synergy allows for increased productivity, innovation, and the ability to tackle complex tasks or projects that require multiple skills.

### Collaboration

Teams are formed to foster collaboration among individuals with diverse skills, knowledge, and perspectives.

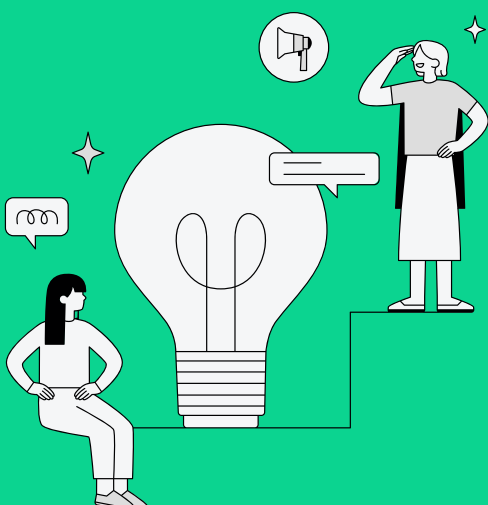
## Diversity and Inclusion

The contributions, presence, and perspectives of different people are valued and integrated into the team-work. to generate new ideas and improve team-work.



## Development and Growth

Meaningful interactions among team members will lead to a shared benefit. Together you can go faster and further.

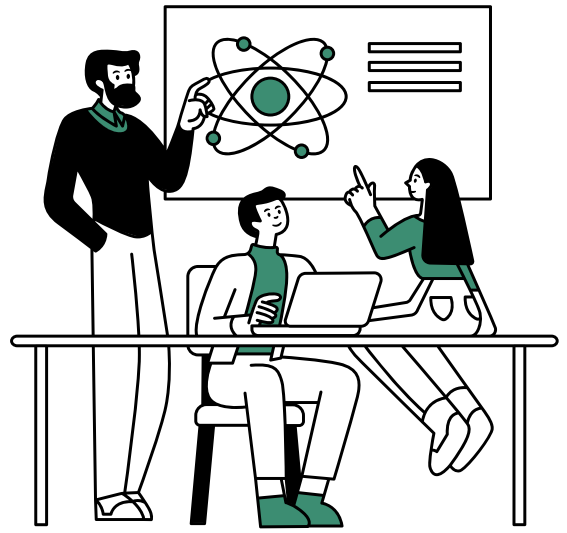


# Key phases of Community mapping

01

## HOW THE SYSTEM WORKS

Learn about the players in the value chain:  
those who grow, process and sell  
consumers' food From farm to table  
or from farm to the bin?



02

## GETTING TO KNOW THE COMMUNITY

Go out, equipped with clipboards  
and camera, to discover all players  
related to the food value chain.  
Youth will come back with lists of  
players and beneficiaries.



03

## DATA ANALYSIS

Put the data collected on  
GOOGLE MAPS or a huge  
paper sheet. Add information  
for each actor you observed.



04

## CLASSIFICATION OF THE WASTE FOOD IN THE COMMUNITY

Learn more about the waste produced  
and how to solve those issues



05

NOW YOU ARE  
READY TO  
DEVELOP YOU IDEA  
AND PREPARE A  
PLAN!



The European Commission support for the production of this publication does not constitute an endorsement of the contents which reflects the views only of the authors, and the Commission cannot be held responsible for any use which may be made of the information contained therein.